

Public Transport

Busways Routes

- 323 Port Macquarie to Lighthouse Beach (Loop Service)
- 324 Port Macquarie Marbuk Ave to Settlement City
- 329 Settlement City to Port Macquarie Yarranabee Rd (Loop Service)
- 333 Kendall to Port Macquarie via Bonny Hills
- 334 Lighthouse Plaza to Settlement City
- B Existing Bus Stops

Active Transport

Cycle Routes

— — On-Road Cycle Route

- - - - Shared Path

Pedestrians Routes

- - - - Pedestrians Path

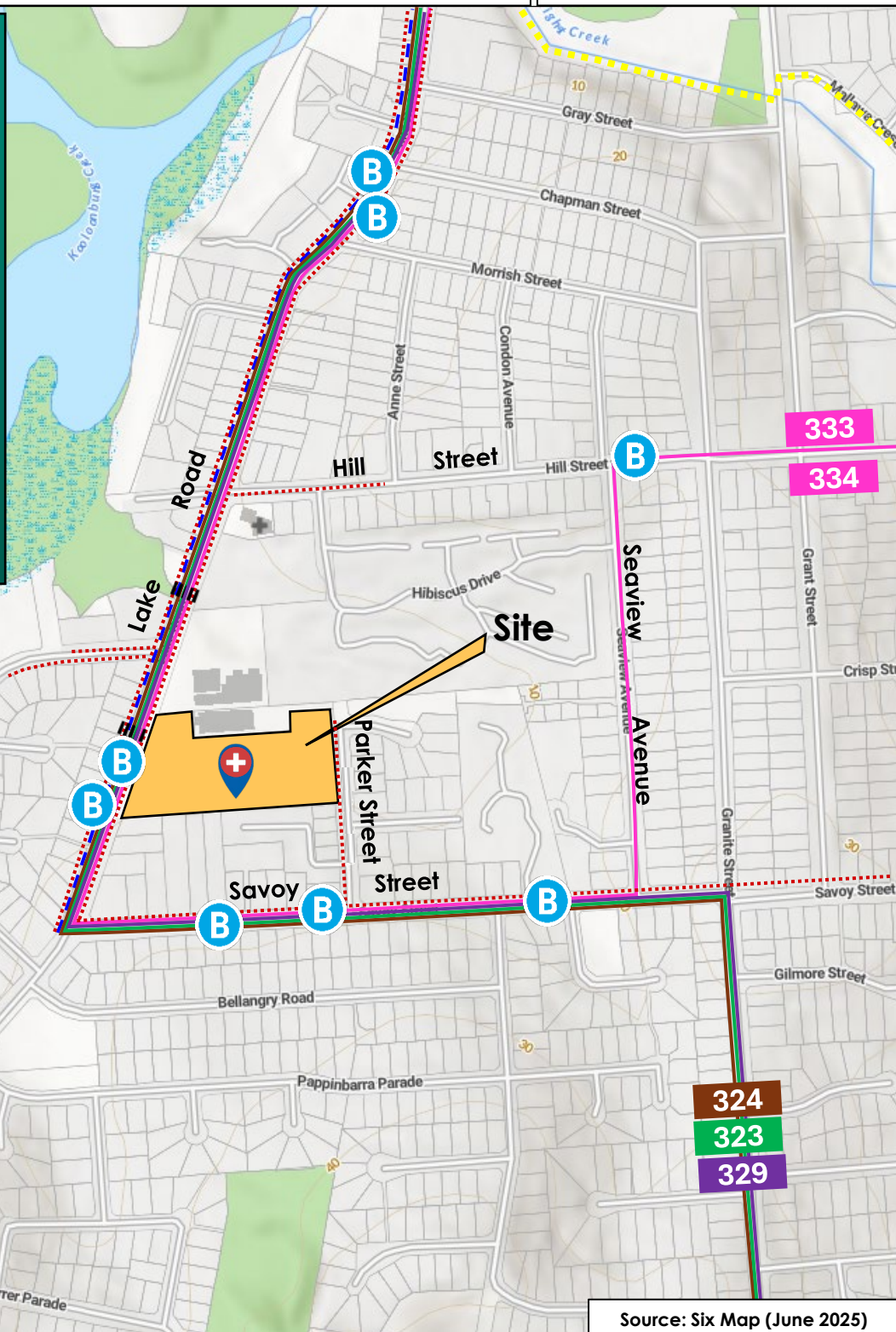
■ ■ ■ ■ Pedestrian Crossing

 **Port Macquarie Private Hospital**
Part of Ramsay Health Care

Port Macquarie Private Hospital

Transport Access Guide

June 2025



Source: Six Map (June 2025)

B Bus: The nearest bus stop is conveniently located right next to the site on Lake Road. Additional bus routes and stops can be found within a short 6-minute walk. The closest stop is serviced by up to five different bus routes, offering a range of travel options. A brief overview of available services is provided below.

| Bus Routes | Frequency (Peak) | Frequency (Off- Peak) |
|------------|---------------------------------------|-----------------------|
| 323 | 60 minutes between 7.02 pm – 11.02 pm | |
| 324 | ~ 14 -54 minutes | 60 minutes |
| 329 | 10:44 am and 2:34 pm | |
| 333 | ~ 1.5 hours | ~ 2 hours |
| 334 | ~ 30 minutes | ~ 2 hours |

For detailed timetables and information on accessible transport options, please visit the Transport Info website at www.transportnsw.info.

End-of-Trip Facilities: The hospital offers convenient end-of-trip amenities for staff, including multiple secure lockers and two dedicated shower/change rooms—one for males and one for females.

Taxis & Rideshare Services: Taxis and Uber vehicles are welcome to pick up and drop off passengers at the designated zone near the hospital entrance. To ensure availability—particularly for wheelchair-accessible taxis—it is recommended to book in advance by contacting Port Macquarie Taxis at (02) 6581 0081.

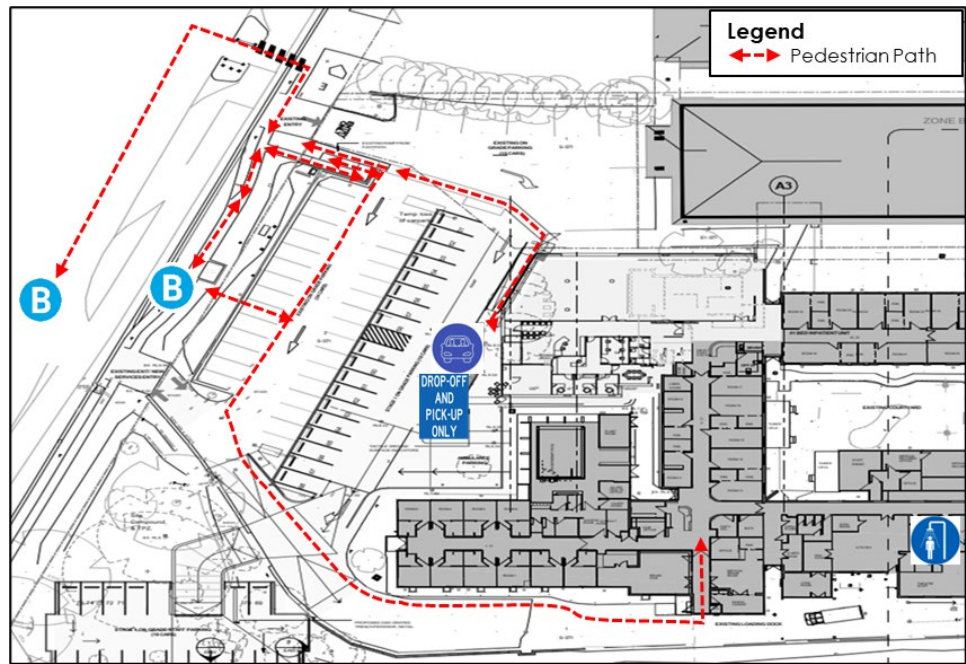
Plan Your Journey with Ease: For a convenient overview of your travel route, including distance, estimated travel time, and alternate options, use [Google Maps](https://www.google.com/maps). The map provides detailed directions and helps you choose the most efficient path.

To explore the best public transport options, check timetables, or receive real-time travel alerts, visit the [Transport for NSW Trip Planner](https://www.transportnsw.info) on your phone, tablet, or computer.

Pick-up/Drop-off zone:

Rehabilitation Patients – Access via Lake Road (southern entry). A designated pick-up and drop-off zone is located on the western side of the hospital building. See map below for zone location.

All Other Patients including general and specialist appointments – Access via Parker Street. A designated pick-up and drop-off zone is located on the eastern side of the hospital building.



For further public transport information go to www.transportnsw.info or call 131 500

Contact:
 Port Macquarie Private Hospital
 86 Lake Road, Port Macquarie NSW 2444
 (02) 6582 9800
<https://www.portmacquarieprivate.com.au/>